

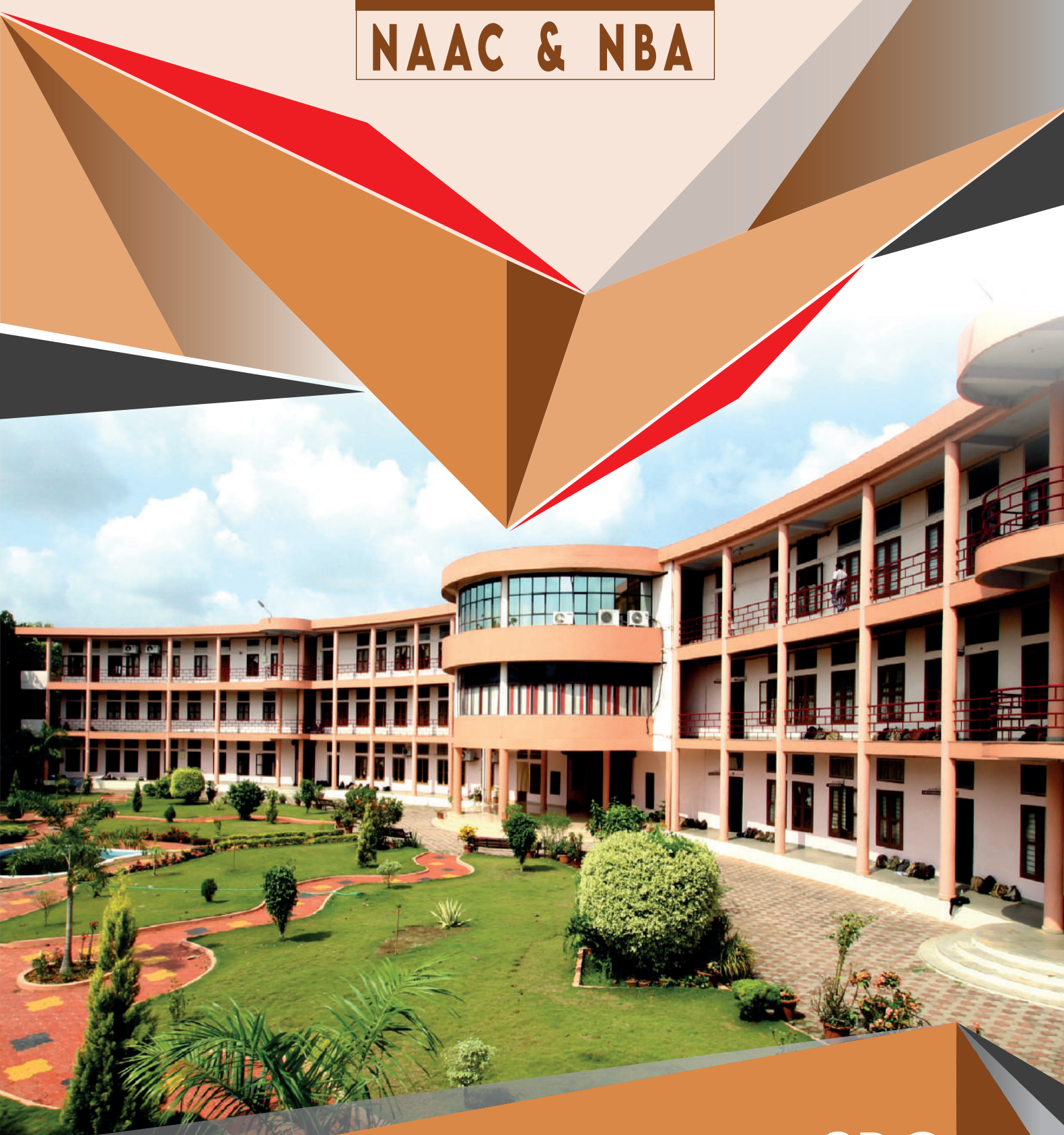


# SREE BUDDHA COLLEGE OF ENGINEERING

PATTOOR P.O NOORANAD ALAPPUZHA (Dist.) KERALA 690529  
Approved by AICTE and Affiliated to APJ Abdul Kalam Technological University

ACCREDITED BY  
**NAAC & NBA**

PROSPECTUS  
2022



INSTITUTION  
CODE **SBC**



## Arts & Sports



While the books educate students with theoretical knowledge, extra curricular activities like sports, arts and music help them learn the real essence of life. These activities help them in their overall development. Playing a sport is good not only physically, but also socially. Arts enhance creative and innovative thinking. The Student Affairs Committee (SAC) of SBCE, coordinates the Arts and Sports activities in the college. 'ASTRAL' an annual national level technological student fest showcases leadership and organisational skills while sports activities enhances their physical fitness.



University Interzone Champions  
College Volleyball Team  
(2019-20)



College Volleyball Team winners  
for the 4th Time in a Row at  
St. Thomas College of Engineering,  
Changanur



3rd Place (2019)  
University Intercollegiate C Zone  
College Cricket Team



## Notable Alumni



JISHNU P  
ME 2017  
GAIL



HAARISON T M  
ME 2020  
COGNIZANT



ABHIJITH RAJ  
CSE 2016  
ERNST & YOUNG



SAYANT  
CSE 2021  
INFOSYS



ANU SENAN  
BT & BCE 2006  
UNICEF



SNEHA SAJI  
BT & BCE 2020  
ZIFO Technologies



JUSTIN JOHN  
EEE 2021  
ACCENTURE



MATHEW A K  
EEE 2010  
KSEB



BIVINA GR  
C E 2012  
Faculty, NIT Bhopal



SURAJ S  
C E 2017  
Southern Railways



NANDITA V  
ECE 2018  
UST GLOBAL



JAISION JOHN  
ECE 2018  
IBS

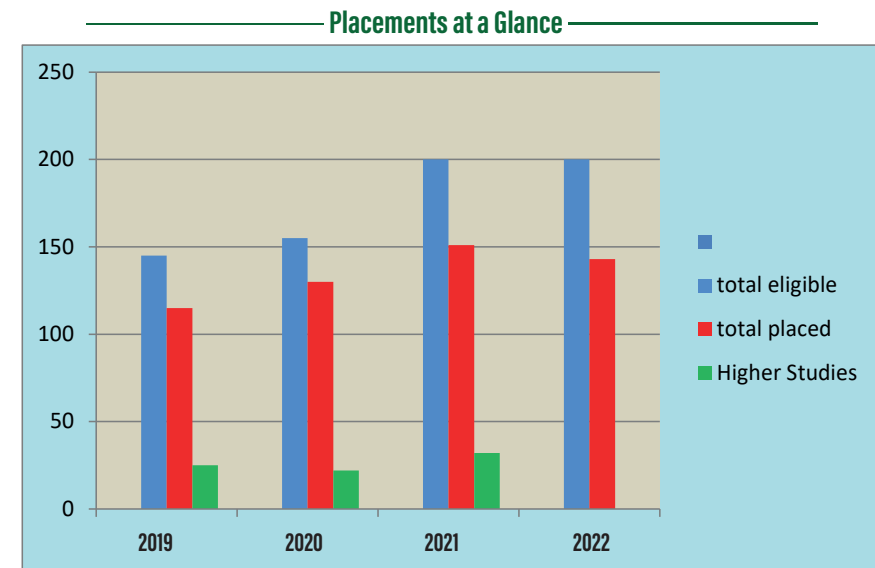
For Admission details kindly contact  
**SREE BUDDHA COLLEGE OF ENGINEERING**  
Pattoor, P.O, Nooranad, Alappuzha (Dist.) Kerala-690529

📞 **94460 14317, 94464 72562**  
Please visit us at [www.sbce.ac.in](http://www.sbce.ac.in)



## Placements

The College has a well organised Training & Placement Cell. A structured programme is implemented for enhancing the communication skill of students right from the 1st year. 'Language lab' helps students to improve their pronunciation and acquire linguistic skills. Regular training programmes are arranged by experts in the field to enhance the overall personality of the students. All eligible students are provided with multiple opportunities while in campus and are also provided placement assistance after passing out. The college has been able to place 90% of the eligible students every year in various reputed companies and over 150 students from the current final year batch is already placed.



### Our major recruiters



## Awards



ARUNIMA S KUMAR  
CSE 2012  
NSS Best Volunteer Award  
(National Award Winner 2012)



ANISHA P  
ECE 2019  
NSS Best Volunteer Award (2018)



ATHIRA  
CE 2020  
NSS Best Volunteer Award (2019)



## Achievements



Prof. V. Prasad, Sri. A. Sunil Kumar (Secretary & Treasurer, SBES), Principal and faculty of Sree Buddha College of Engineering presenting laptops to meritorious students as per KTU scheme 'Bridging the Digital Divide'.



ATHUL U, S3 ECE  
Alappuzha District Top Performer Award  
Innovation Premier League (KSUM)



## Performers



ERIN MARIAM SHAJI  
CE6, Consistently secured  
SGPA 10 in S1, S2, S3 & S4.



ALINA M GEORGE  
CSE 2019-NSS Top Scorer  
Highest Marks in final  
examination amongst all  
NSS Volunteers under  
KTU.





## About the College

Sree Buddha College of Engineering, Pattoor (NBA & NAAC Reaccredited) is managed by Sree Buddha Educational Society, a charitable institution sponsored by Sree Buddha Foundation, Kollam. A group of educationalists under the leadership of Prof. K Sasikumar envisaged the emergence of a technical Institute in the rural area of Pattoor which can promote the weaker sections of the society by providing quality education at the global level, besides providing world class infrastructure and state of the art facilities, academic planning and administration suits the modern trends in the scenario, supportive measures are also implemented by way of scholarships, soft skill development, placement training and placement drives, sports, games, cultural activities, technical events and campus active programmes.

- **Well equipped & spacious** Labs and Workshops
- **Automated & Wifi** enabled library **Online** reference section
- **Digitilized** classrooms for **UG & PG**
- **Dedicated Placement Cell** for training & **Placements**
- **Tranquil & Robust** atmosphere
- **Facilities** for **Sports**, gymnasium & **fitness center**
- **Transport system** connecting the campus to **all nearby areas**

## Message from the Principal

*I am greatly honoured and proudly place on record the fact that Sree Buddha college of Engineering Pattoor, the visionary dream of its founder Chairman Prof. K. Sasikumar—a servant of education has unfolded into an institution of glorious past and great future. Our earnest attempt should be towards upholding academic integrity, accountability, sustaining open and transparent systems, and being sensitive to social responsibilities. This could be possible only through a collaborative, shared, and consultative work culture. Building on the strong foundation of the college, let us all strive for cautious, consistent, and catalytic improvement in the overall development, paving way for innovative ideas and thinking. We are encouraged, looking at bright and successful careers of our thousands of students, which have benefited the society. We feel proud that we are part of such an excellent institute, which is shaping modern India. On behalf of the entire Sree Buddha fraternity i earnestly welcome the new aspirants to our campus.*



Dr.K Krishnakumar  
Principal, SBCE, Pattoor



Indian Institute of Chemical Engineers (IICHE) Kochi, Regional Center Award for Academic Excellence presented to Ms. Shynu Mary John (S8 BT&BCE) in presence of Prof. K Sasikumar, Prof. V. Prasad (Chairman & Secretary, SBES) and Principal Dr.K Krishnakumar.

## Courses Offered

B.Tech, M.Tech & PhD programs are offered in the following streams of engineering-

### CIVIL ENGINEERING

Intake B.Tech-60 seats | M.Tech-24 seats

Civil Engineering is one of the oldest branch of engineering that deals with the design, construction and maintenance of the physically built environment, like roads, bridges, canals, pipelines, sewage systems, dams and buildings. This department is equipped with state-of-the-art infrastructure supplemented with qualified and experienced faculty.



### ELECTRONICS & COMMUNICATION ENGG. ROBOTICS & AUTOMATION

Intake B.Tech-30 seats

Electronics & Communication Engineering involves the transmission of information across channels such as coax cable, optical fibre or free space. This branch of engineering develops everyday devices such as transistors, integrated circuits and printed circuit boards (PCBs) which are used in computers, MP3 players, mobile phones, televisions to name a few. Robotics & Automation (RA) is an interdisciplinary branch that deals with design and application of robots and the use of computer for industrial automation.



### ELECTRICAL & ELECTRONICS ENGINEERING

Intake B.Tech-30 seats | M.Tech-24 seats

Electrical & Electronics Engineering (EEE) is a field of engineering that generally deals with the study and application of electricity, electronics and electromagnetism. Electrical and Electronics engineers are involved in the analysis of existing systems (whether electrical, electronic or computer systems) and they are often involved in creating and designing new products and systems for manufacturing industries.



#### Dept. Toppers



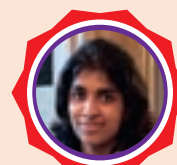
GAURI S  
CE 2021  
CGPA 9.85



RUKSANA J  
CSE 2021  
CGPA 9.75



REVU RAJ  
ECE 2021  
CGPA 9.08



ANEETA SAM  
EEE 2021  
CGPA 9.39



DEVIKA K S  
BT&BCE 2021  
CGPA 9.23



RAHUL R  
ME 2021  
CGPA 9.56



### COMPUTER SCIENCE & ENGINEERING

Intake B.Tech-120 seats\* | M.Tech-18 seats

### ARTIFICIAL INTELLIGENCE & MACHINE LEARNING

Intake B.Tech-60 seats

Computer Science and Engineering (CSE) is the most popular course for the engineering aspirants. CSE deals with design, implementation and management of information system of both software & hardware processes. Artificial Intelligence and Machine Learning(AI/ML) is a combination of science and engineering of making computer machines which will perform tasks that require human intelligence. It is a technology that enables a machine to simulate human behavior. Machine learning is a subset of AI that allows a machine to learn from past data without programming explicitly.

### MECHANICAL ENGINEERING

Intake B.Tech-120 seats | M.Tech-18 seats

Mechanical Engineering is also one of the oldest branch of Engineering. It is branch of engineering that concentrates into design, production, usage and operation of machines. Mechanical engineering is diverse subject that derives its breadth from the need to design and manufacture anything from small individual parts and devices (e.g., microscale sensors to inkjet printer nozzles to large systems).



### BIOTECHNOLOGY & BIOCHEMICAL ENGINEERING

Intake B.Tech-30 seats | M.Tech-18 seats

### FOOD TECHNOLOGY

Intake B.Tech-30 seats

Biotechnology & Biochemical Engineering (BT & BCE) is a branch of engineering which incorporates knowledge, methods and expertise from chemistry, microbiology, genetics, chemical engineering and computer science. It has applications in food, pharmaceutical, biotechnology & water treatment industries. Food Technology (FT) has applications in restaurants, food processing and food research laboratories. The department of BTBCE & FT is equipped with qualified faculty and advanced laboratory facilities.



**SREE BUDDHA**  
COLLEGE OF ENGINEERING

**RANKINGS & RATINGS**  
CAREERS360 4.0/5 AA+ | N A A C B+ | Collegedunia 6.5

\*Subject to approval