

**Table 4.3.1 (b) Details of CCTV**

S No.	Location	Type
1	APPROACH ROAD	DAHUA
2	MAIN GATE	HIKVISION
3	MAIN BLOCK PORCH	DAHUA
4	MAIN BLOCK TO CANTEEN	DAHUA
5	CANTEEN FRONT 1	DAHUA
6	CANTEEN FRONT 2	DAHUA
7	CANTEEN TO LIBRARY	CP PLUS
8	LIBRARY FRONT	HIKVISION
9	LIBRARY TO CIVIL	HIKVISION
10	CIVIL TO CSE	CP PLUS
11	CSE TO ME/EEE	DAHUA
12	ME/EEE PORCH	HIKVISION
13	RECEPTION MAIN BLOCK	HIKVISION
14	PRINCIPAL 1	HIKVISION
15	PRINCIPAL 2	CP PLUS
16	ACCOUNTS	DAHUA
17	RECEPTION AREA	CP PLUS
18	RECEPTION TO AUDITORIUM	CP PLUS
19	AUDITORIUM ENTRANCE	HIKVISION
20	AUDITORIUM 2	DAHUA
21	CANTEEN 1	DAHUA
22	CANTEEN 2	DAHUA
23	STUDENTS BIKE PARKING	CP PLUS
24	LH FRONT	CP PLUS
25	LH 02	CP PLUS
26	LH 03	CP PLUS
27	LH 04	CP PLUS

Criterion 4**4.3 IT Infrastructure**



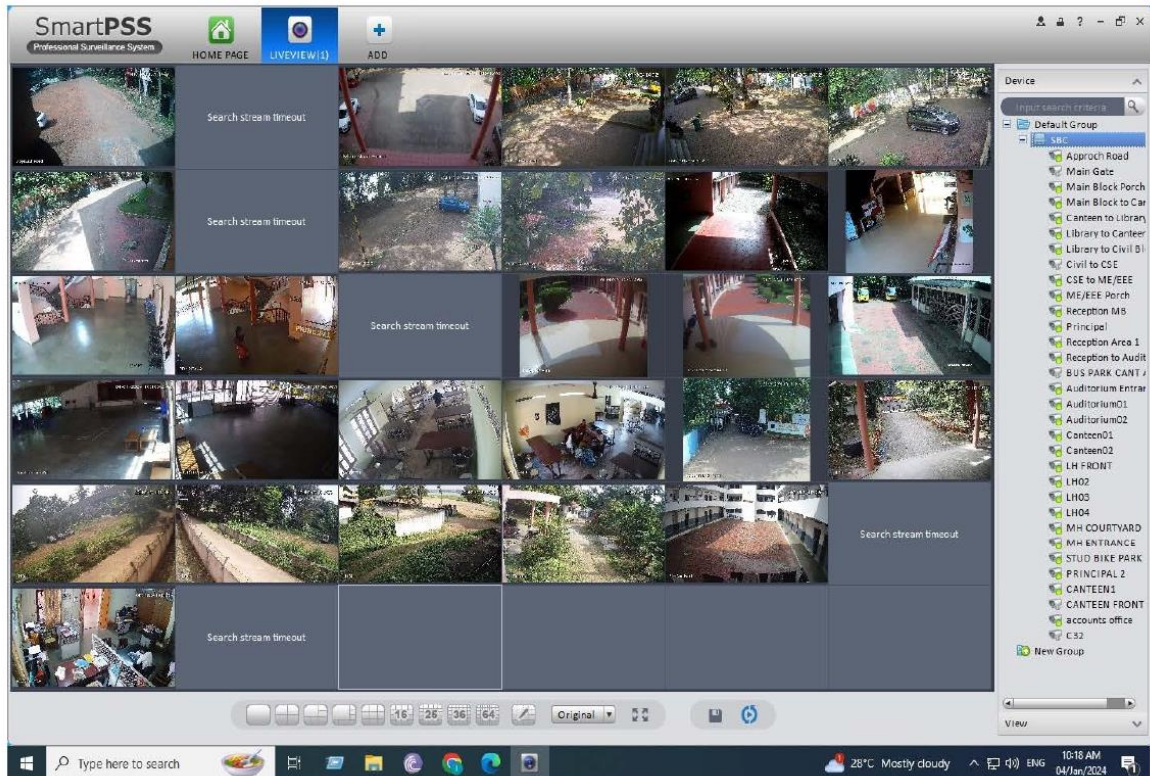
Established in 2002

Approved by AICTE and Affiliated to APJAK Technological University

SREE BUDDHA COLLEGE OF ENGINEERING, PATTOOR (Autonomous from AY 2024-2025)

28	MH ENTRANCE	CP PLUS
29	MH COURTYARD	CP PLUS
30	AUDITORIUM 1	DAHUA

Installing of CCTV cameras at vital points



Criterion 4

4.3 IT Infrastructure